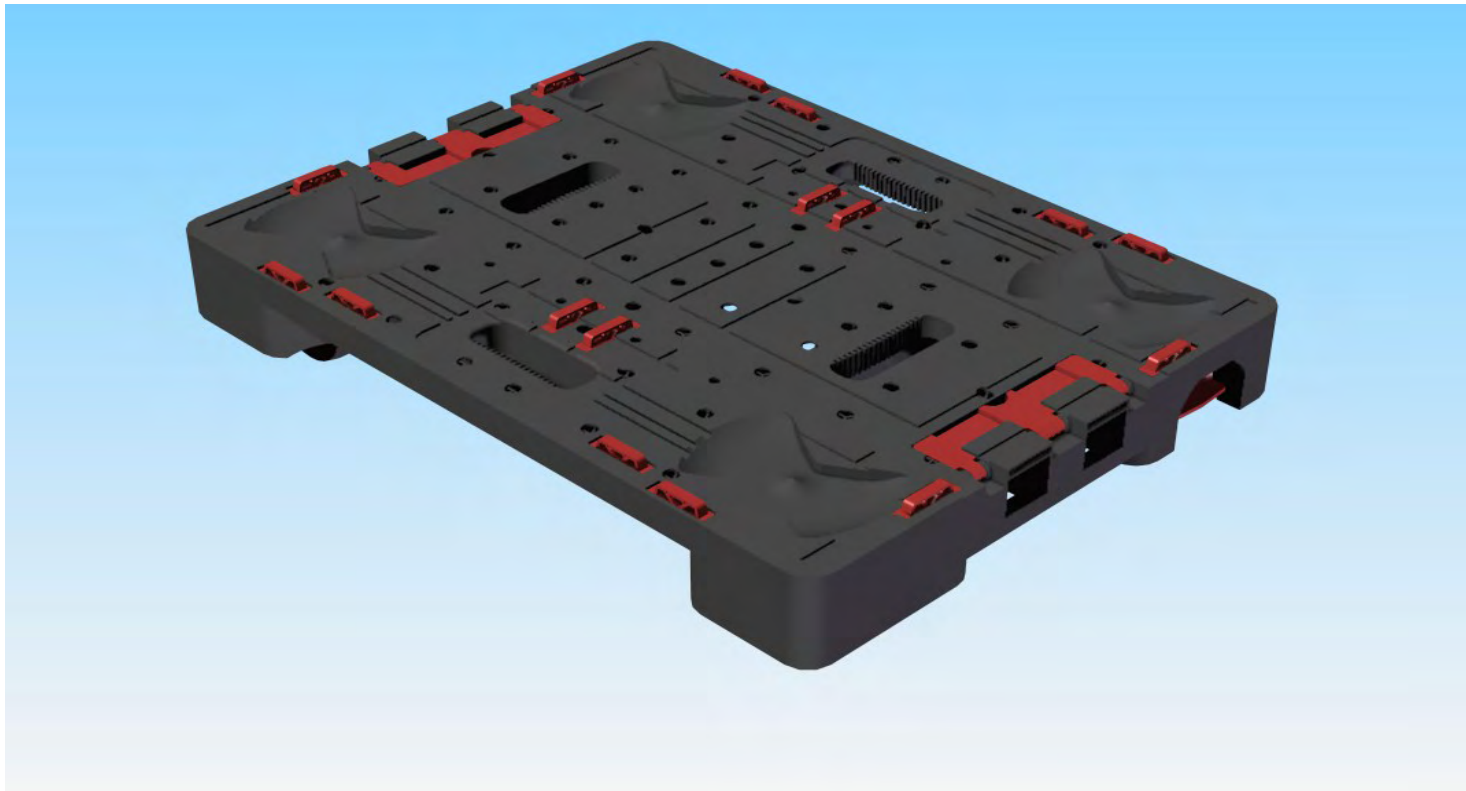




Dollies Options

Option 1



Technical Specification

- Dimensions :- 800mm x 600mm x 100 mm
- Material :- Polypropylene (copolymer)
- Mass :- 4.2 Kgs plus castors
- Load capability :- 350 Kgs

Features

- Capable to be used with 125mm or 100mm castors.
- Stacking location are standard for both castor sizes (dollie on dollie).
- Sprung location devices to accommodate a variety of standard trays.
- Extention flaps to accommodate attached lid security containers when in nested position.
- Four handholes for easy manual lifting.
- Handle location for pull handle.

Features continued

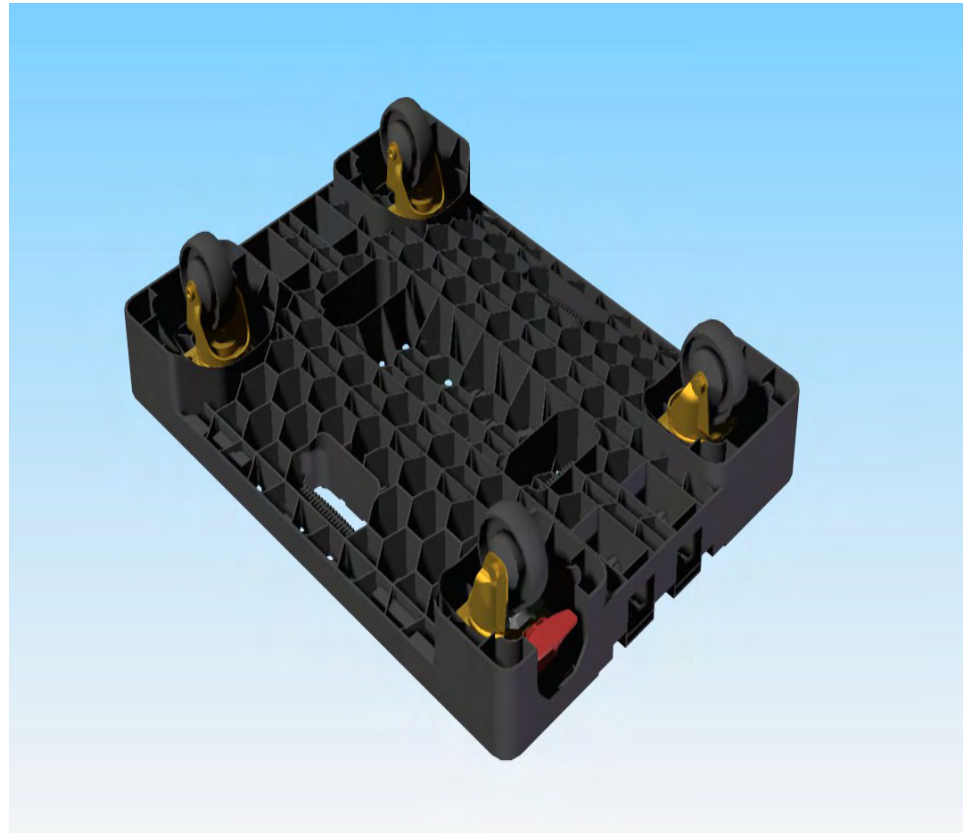
- Castor protection Skirt.
- Honeycomb construction for lightweight , high strength component.
- Full compartment drainage.

Dollie will accommodate

- Supernest range of trays
- Woolworths range of trays
- Existing 180 degree nest/stack trays
- Attached lid range of security containers
- Existing folding crate range (Chep)
- Current Milk Crates
- General 600mm x 400mm stacking trays

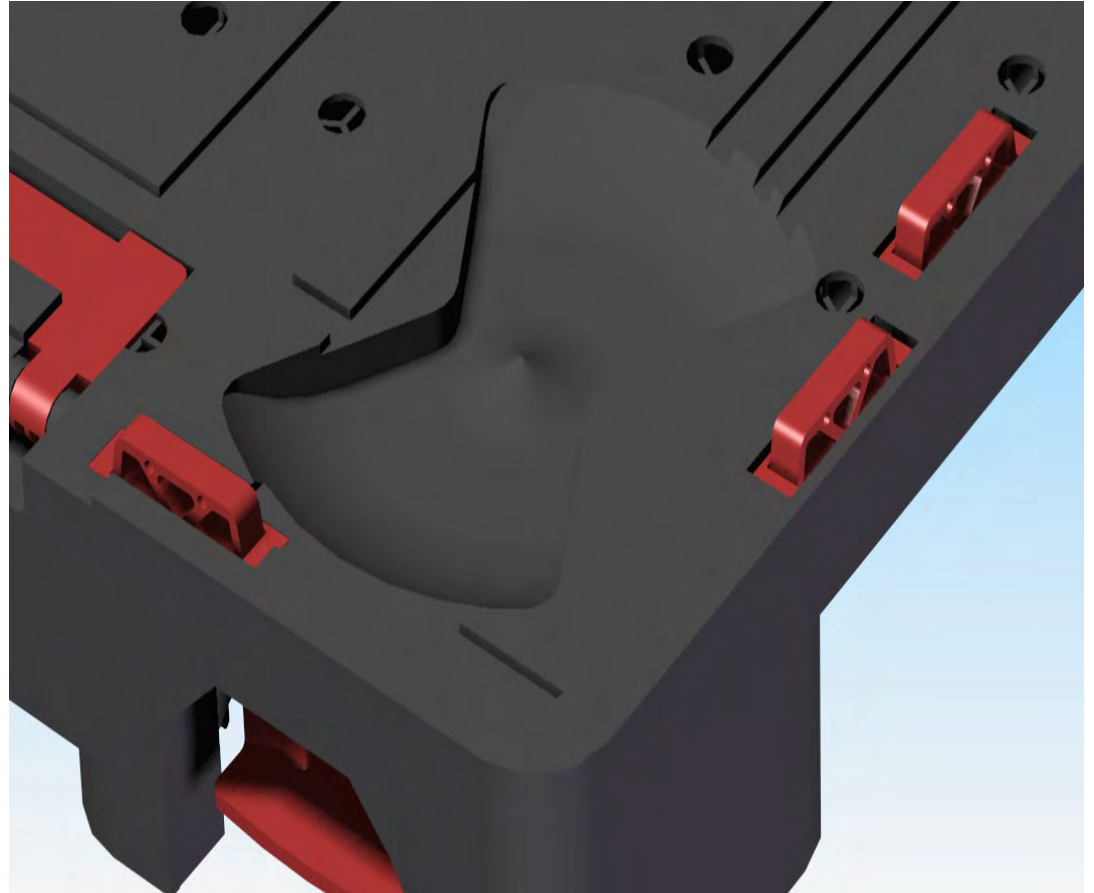
Illustrations

- 100mm castor
- 3 x swivel castor
- 1 x swivel castor with braking system



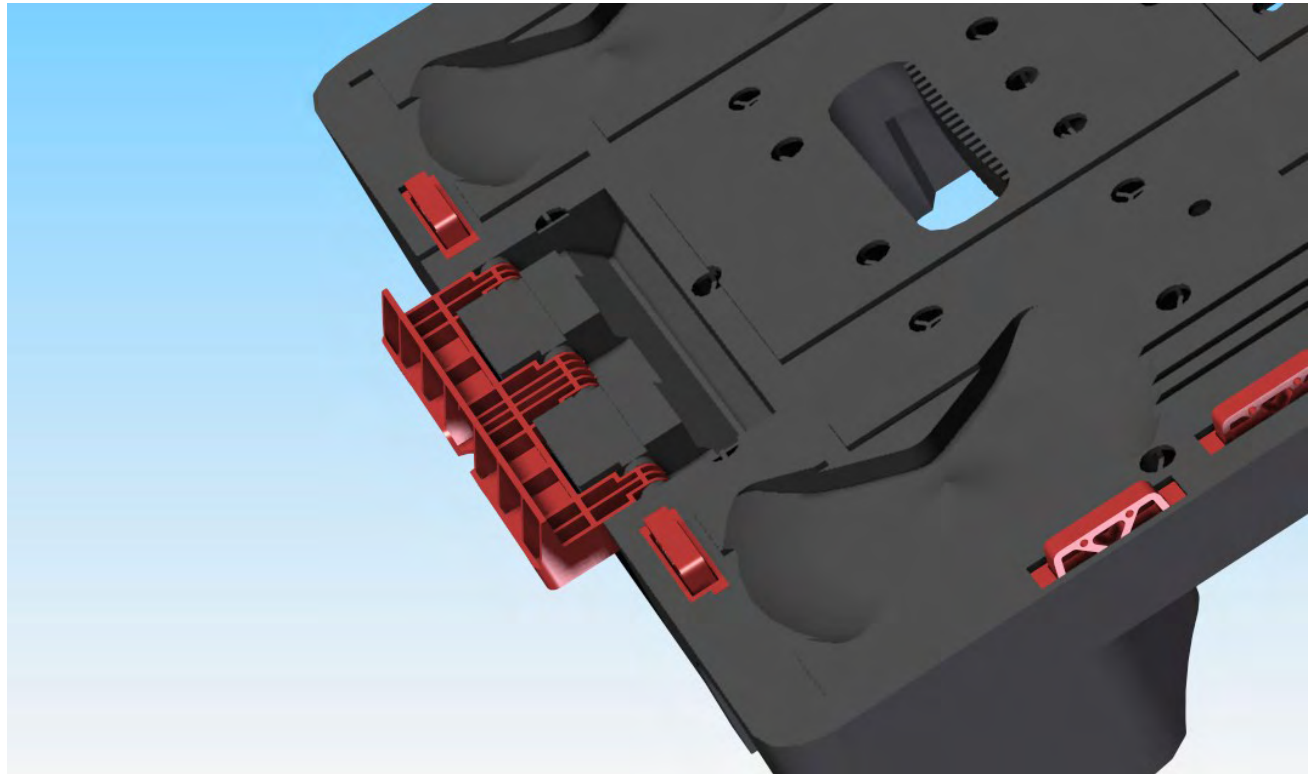
Illustrations

- Stacking location
- Sprung location devices



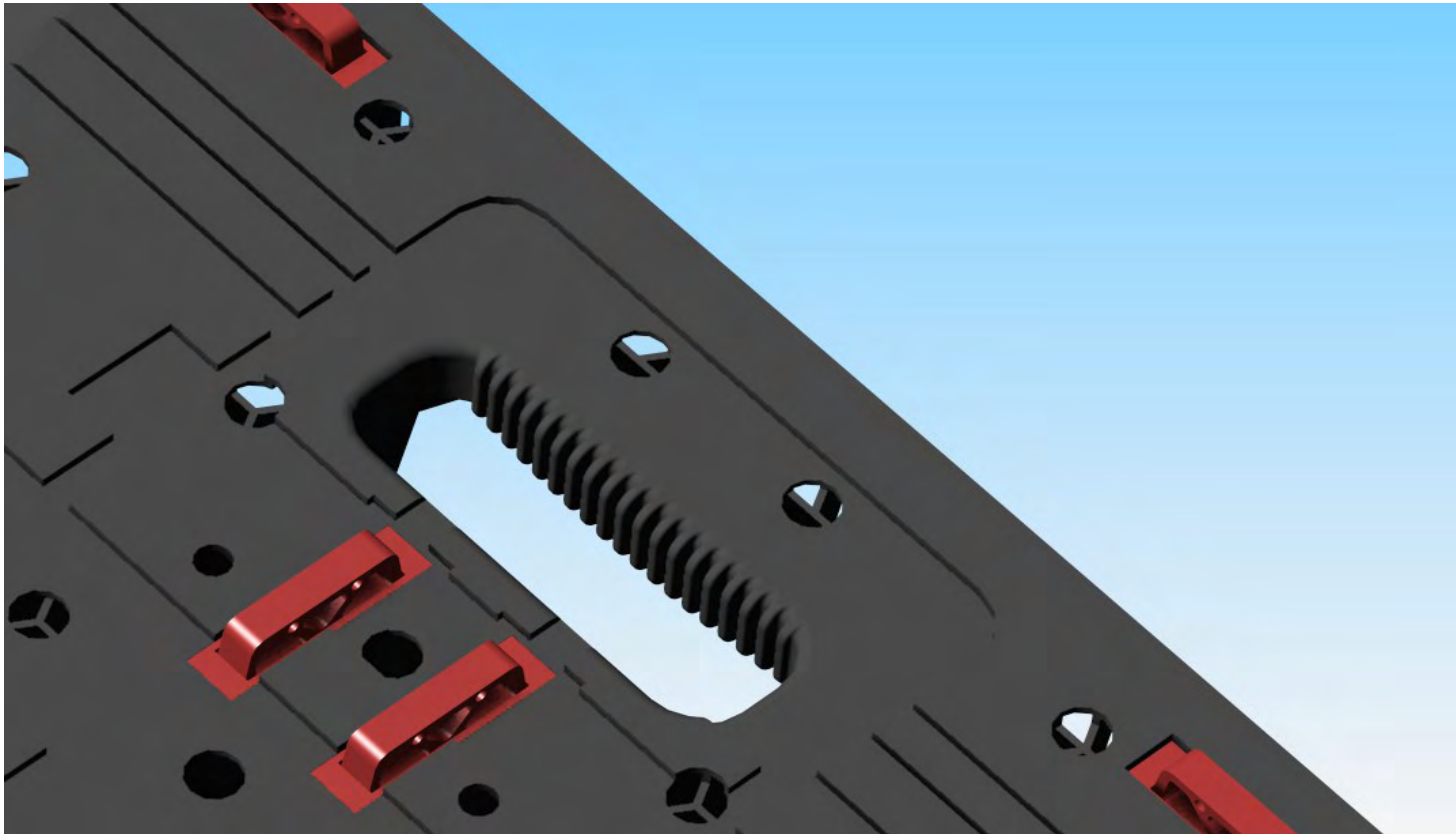
Illustrations

- Extention flaps



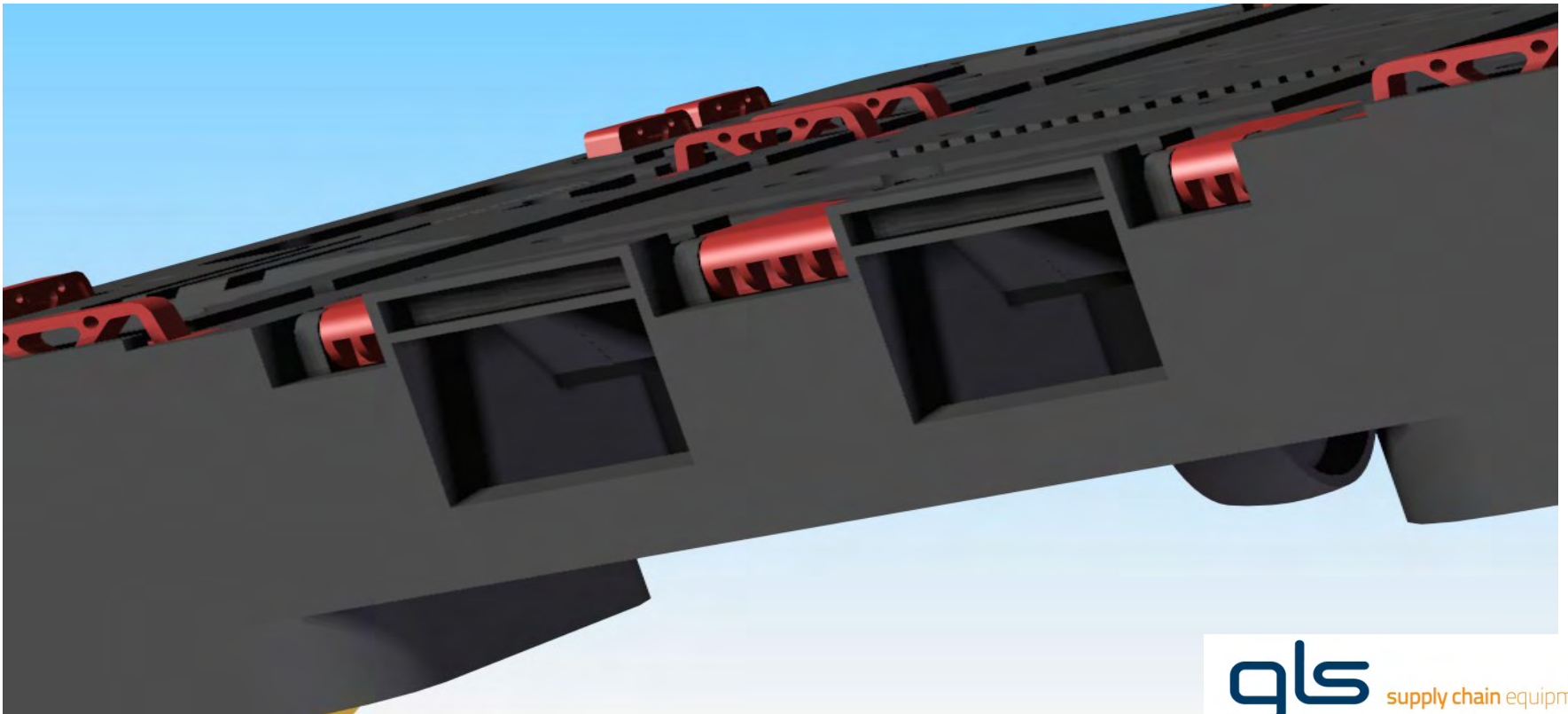
Illustrations

- Handholes



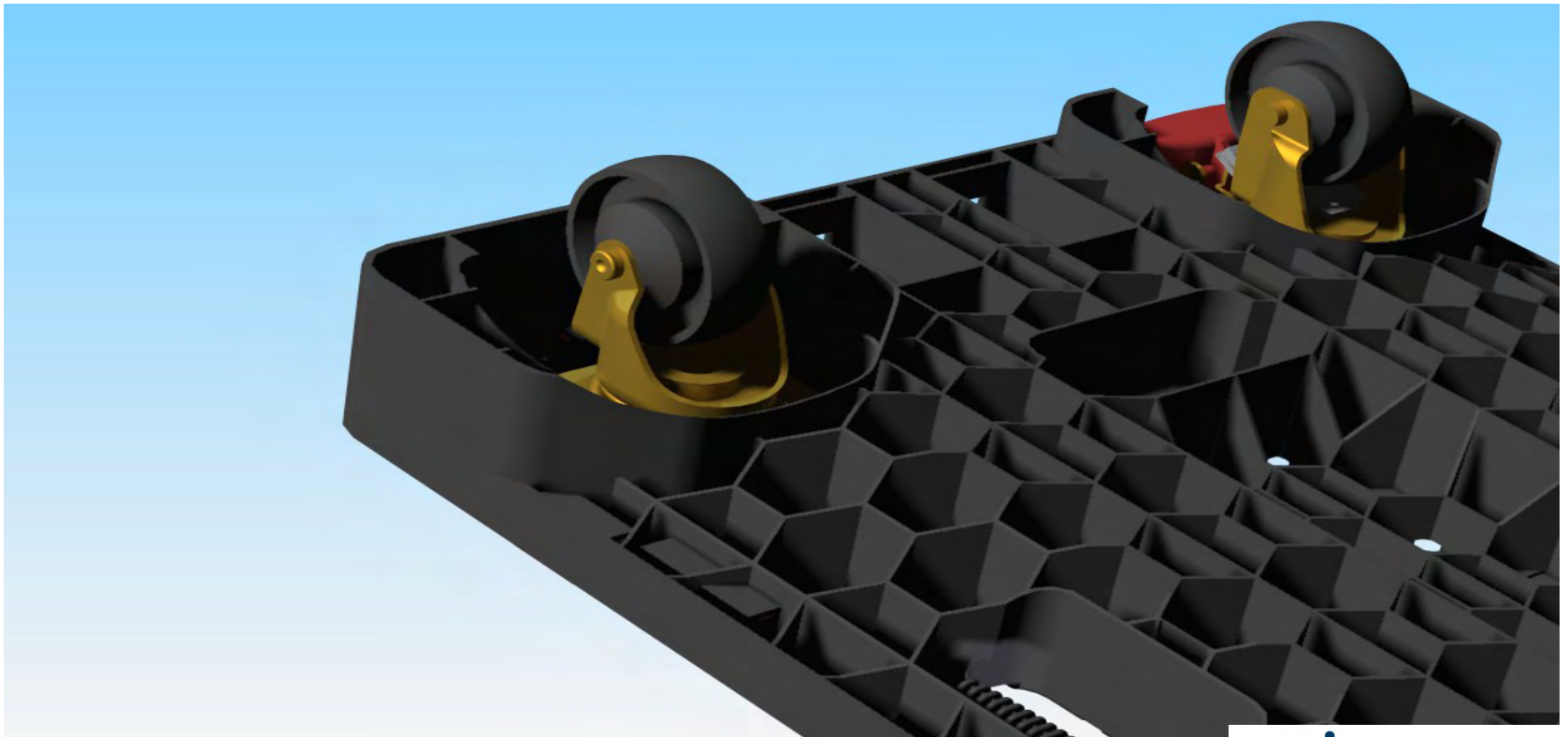
Illustrations

- Handle location for pull handle.

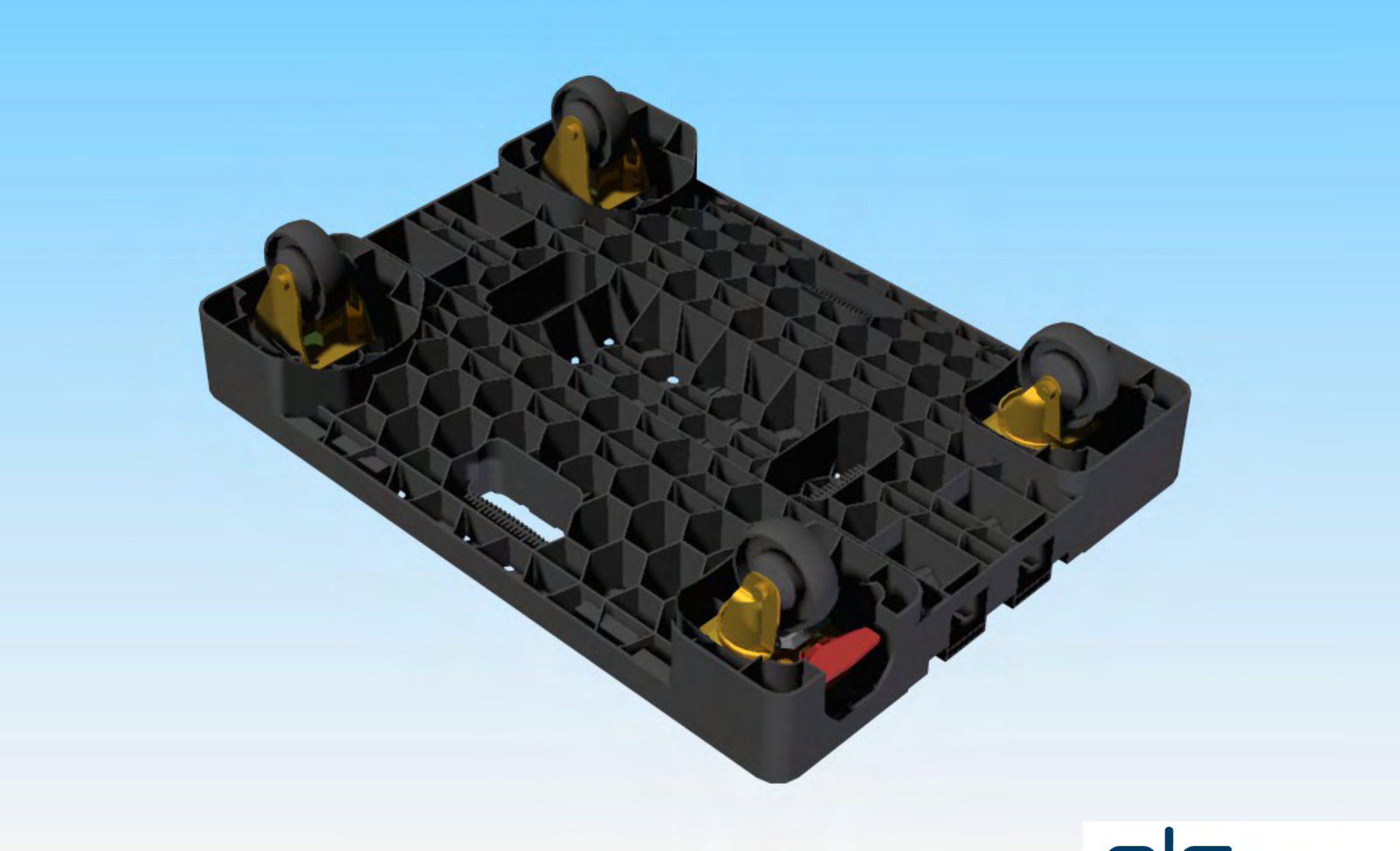


Illustrations

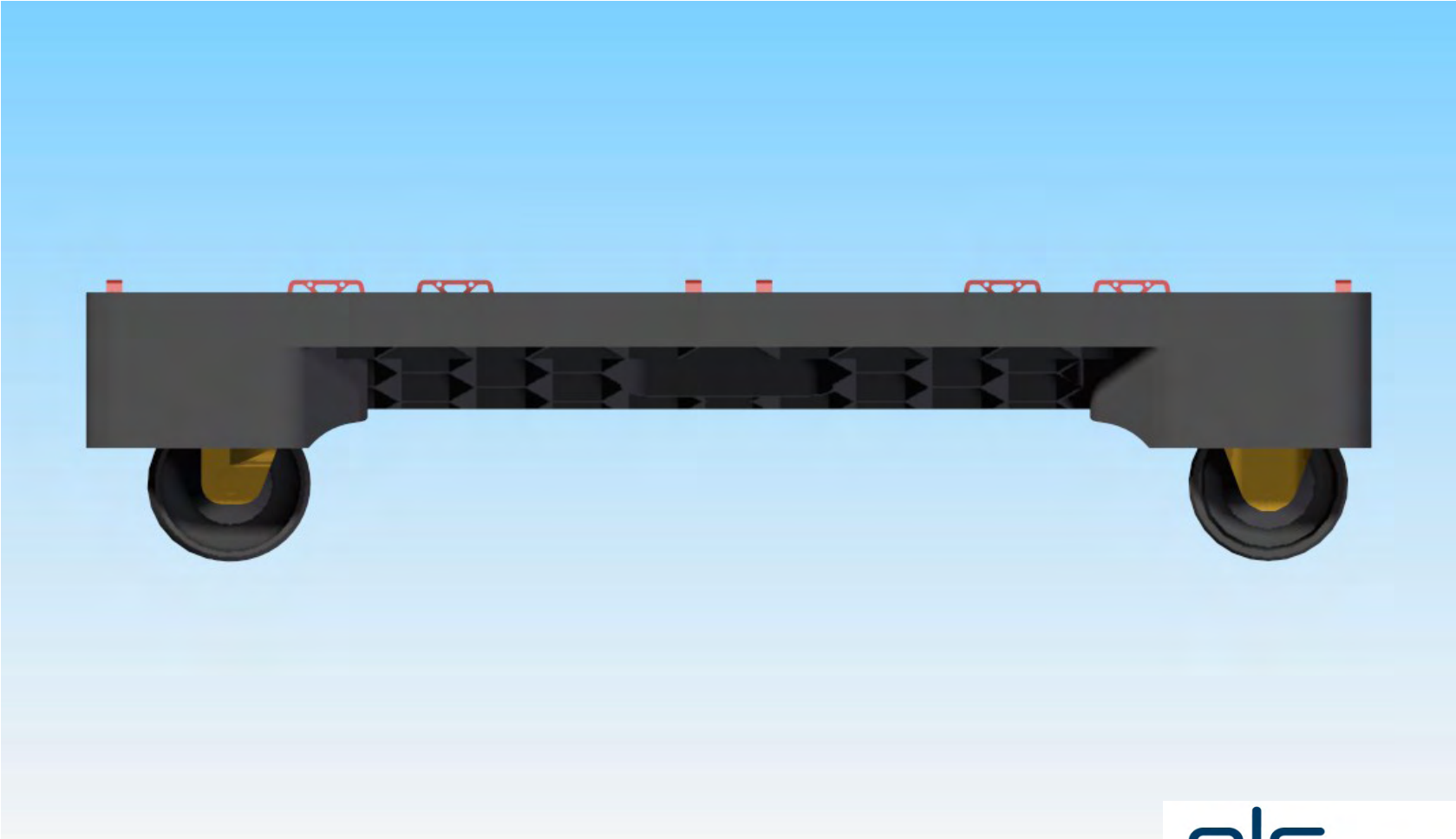
- Honeycomb construction
- Castor skirt



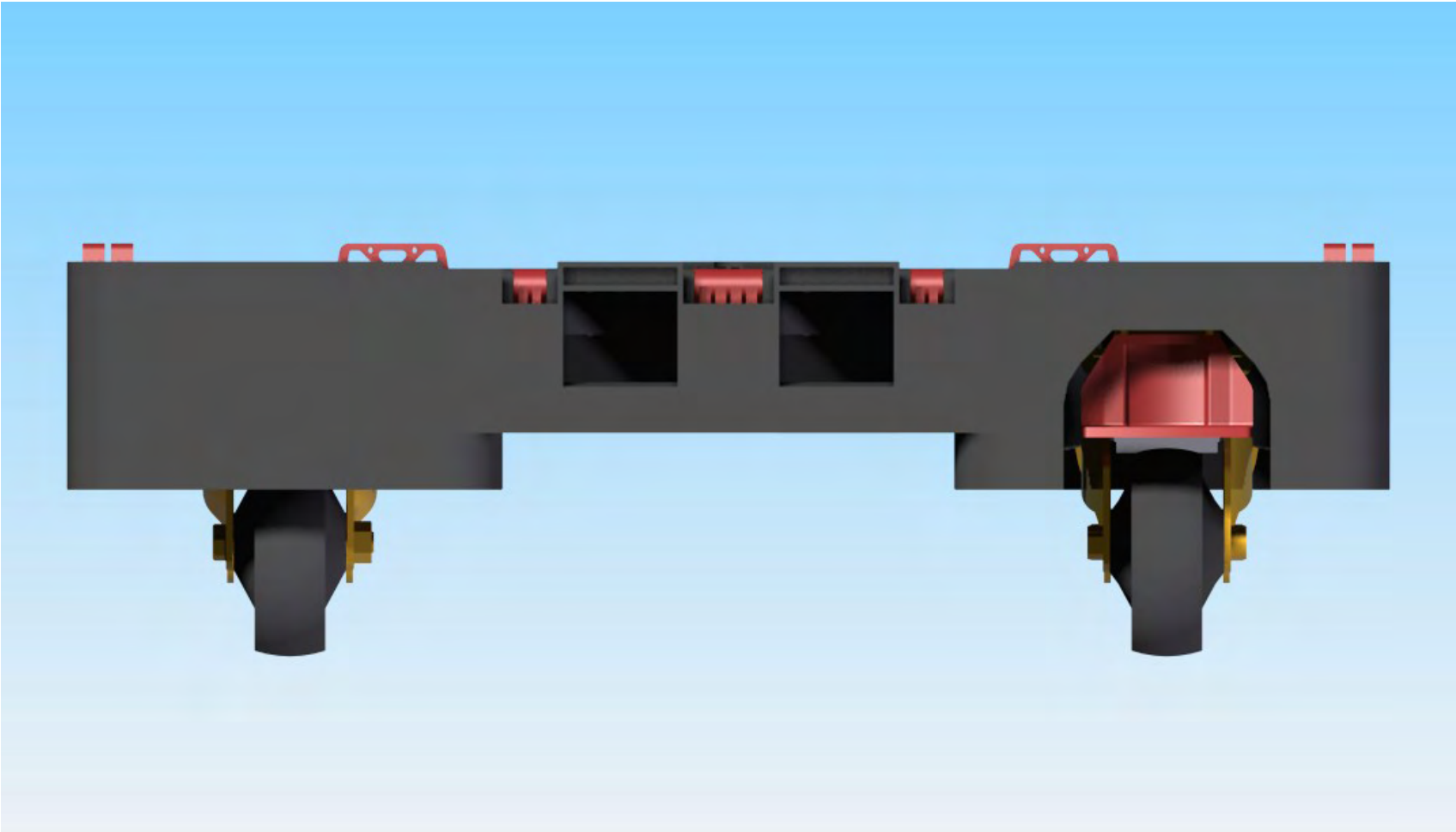
General views



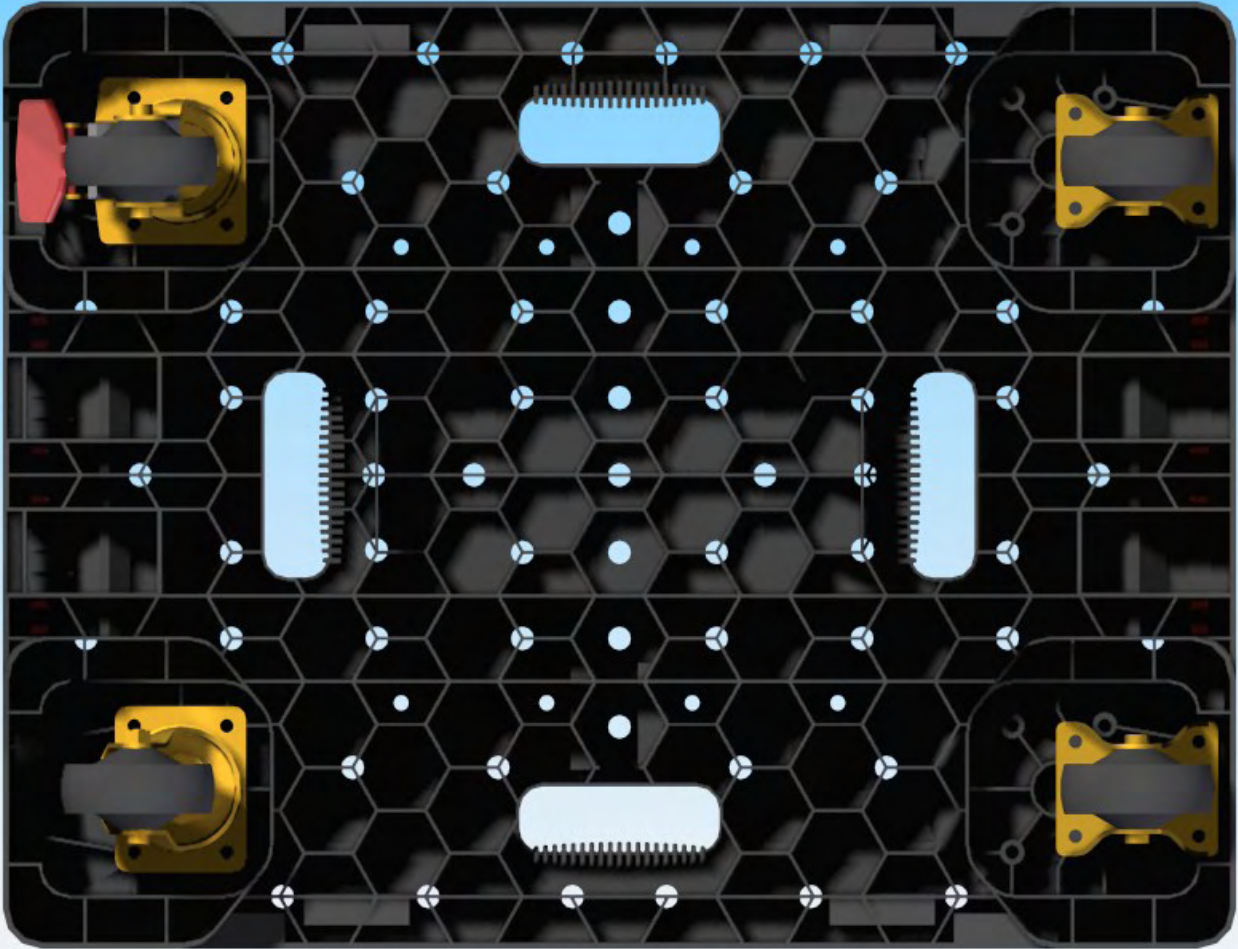
General views



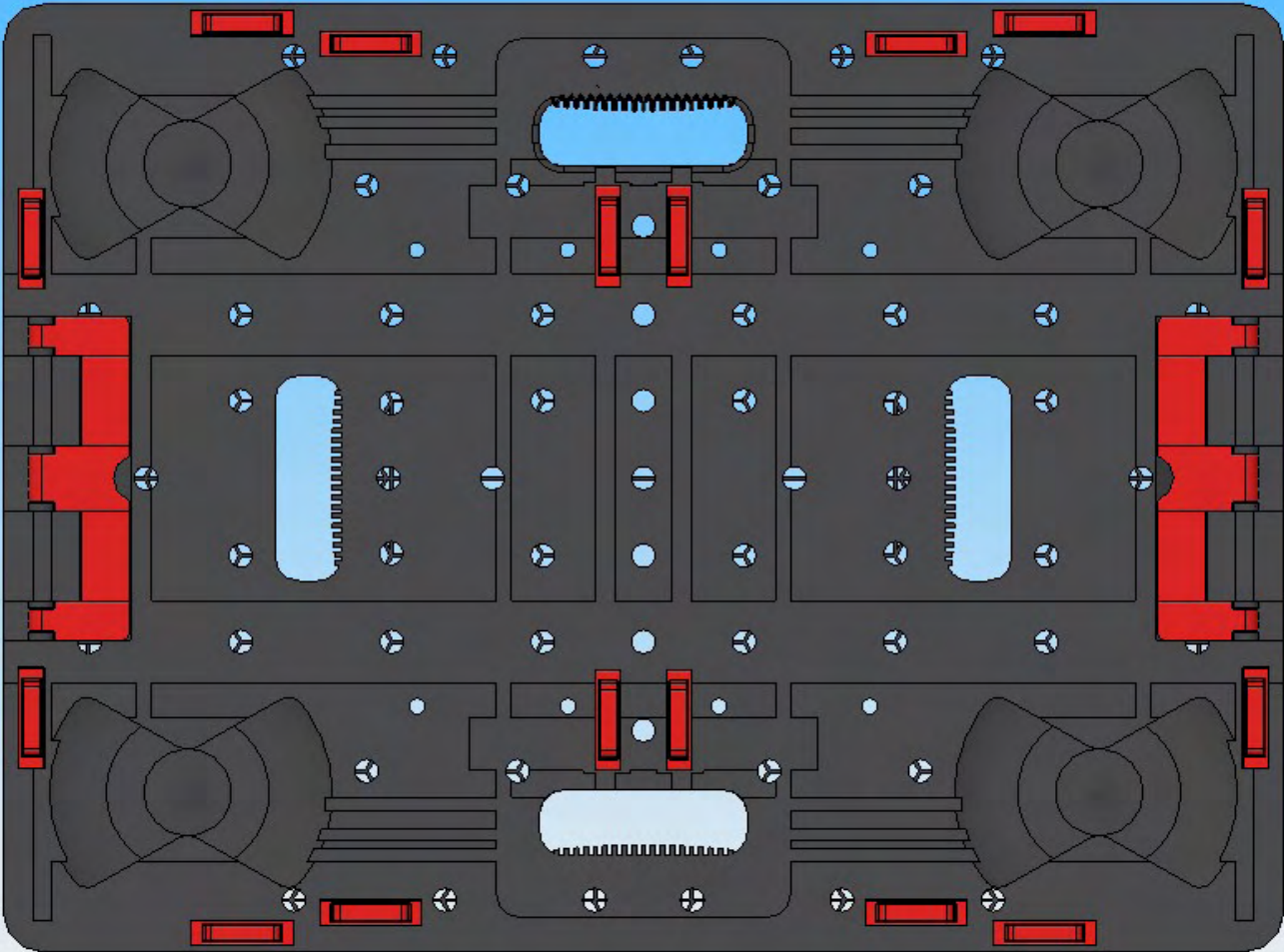
General views



General views



General views



General views



Option 2

